



MH

MARYBOROUGH

HOTEL

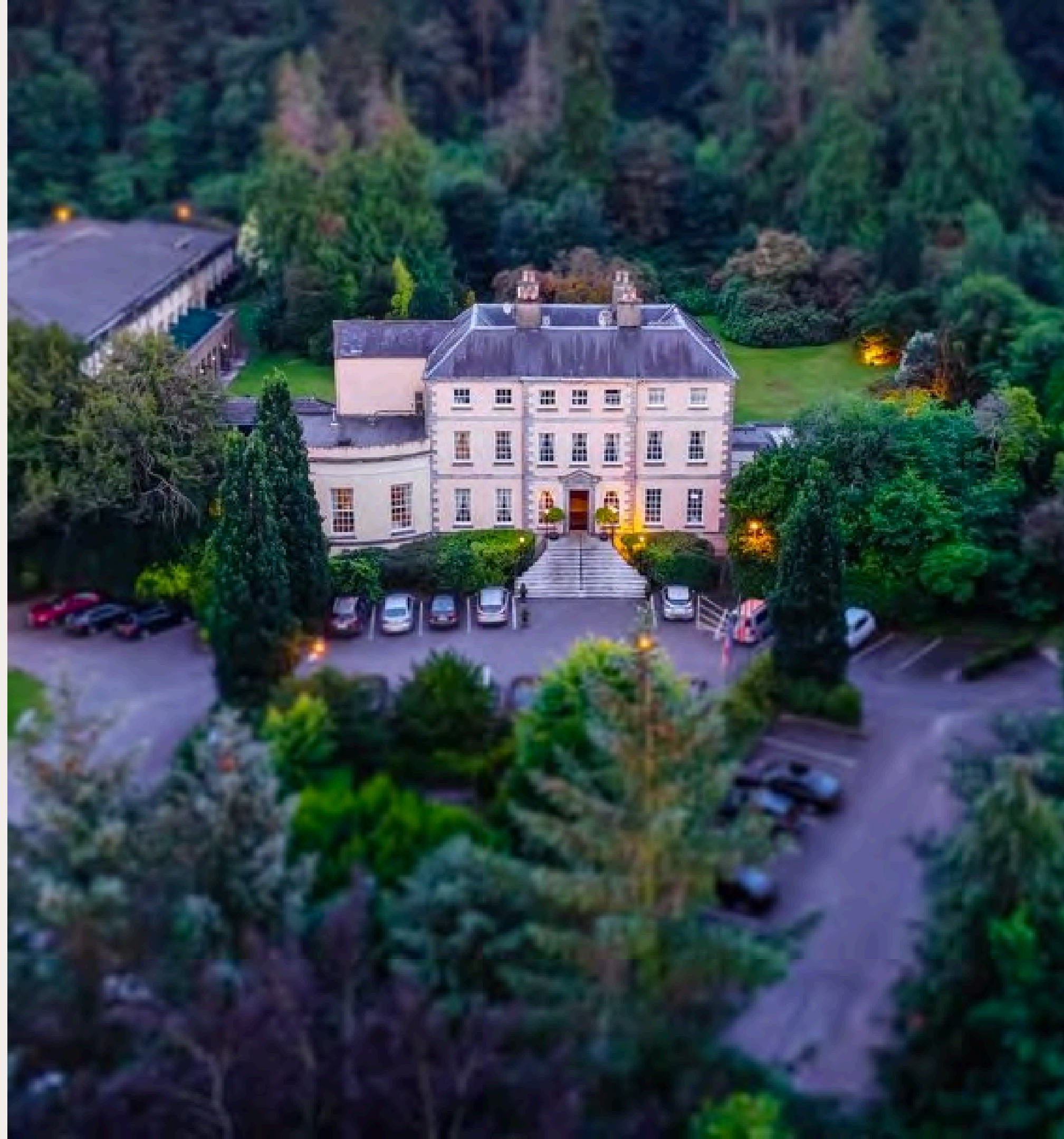
Accessibility Guide

A Comprehensive Guide for All Guests



Contents

Welcome Statement	Page 3
Contact & Assistance	Page 4
Arrival Information	Page 5
Step-Free Navigation & Facilities	Page 6 & 7
Dining & Dietary Needs	Page 8
Accommodation & Room Features	Page 9-12
Emergency Procedures & Medical Contacts	Page 13
Technical Measurements & Gallery	Page 14-29
Conclusion & Credits	Page 30



Welcome

“The Maryborough is proud to participate in **Fáilte Ireland’s Access for Success programme**, an initiative dedicated to advancing accessibility and inclusivity across the Irish hospitality sector. We are committed to ensuring that every guest enjoys a welcoming, dignified, and seamless experience, with equal opportunity to access and benefit from the services, facilities, and accommodations offered throughout the hotel.

Details of our accessible rooms and facilities are outlined below to assist you in planning your stay. Should your specific access requirements not be addressed in this document, our team would be delighted to assist. Please contact us on **+353 21 436 5555** or email **info@maryborough.ie**, and we will be happy to discuss how we can best support your needs.”

— *Justin McCarthy General Manager*



Contact & Assistance

Feedback and Continuous Improvement

The Maryborough is committed to continuously improving our accessibility. If you have any feedback or ideas to improve our inclusivity, please feel free to contact our Accessibility Officer via the main Hotel line (021 436 5555) or by emailing info@maryborough.ie

How to Reach Assistance

Our dedicated Reception Team is available **24 hours a day**.

From your room: **Dial '0'** on any landline.

From your mobile: Dial **021 436 5555**.

Floor Phones: Every floor is equipped with a phone should you require assistance or cannot access your accommodation.



Arrival Information

Public Transport

The Maryborough's entrance is located immediately opposite one of Cork's major bus routes, the **220**.

- From Cork Kent Train Station: Make your way to the City Library and take the **220 bus**.
- Bus Stop: Maryborough Hill (**Stop ID: 246971**).

By Car

Eircode: T12 XR12.

- Accessible Parking: Dedicated spaces are located directly outside our step-free entrance.



Step-Free Hotel Navigation & Facilities

Entrance & Elevators

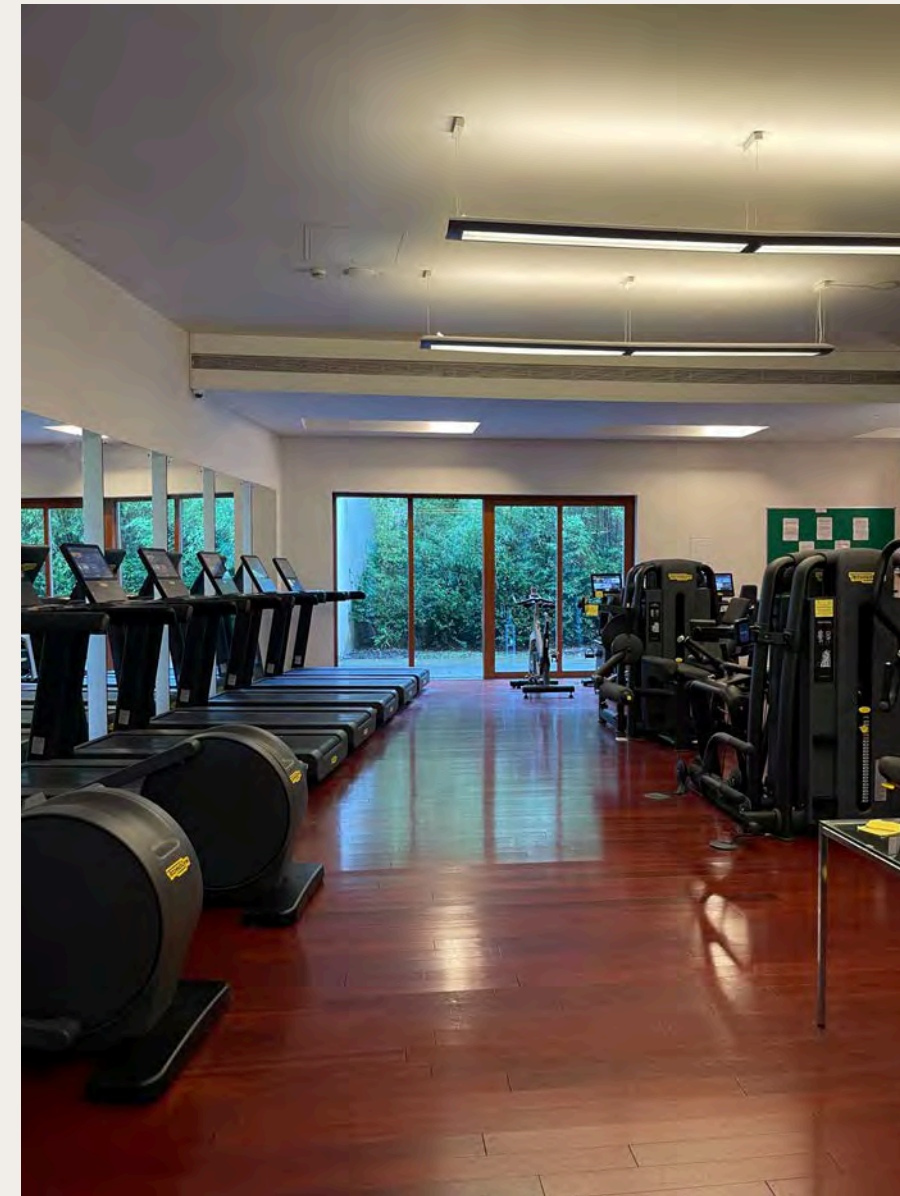
Our lower entrance is step and barrier-free. Upon entry, the elevator is located in under 50 paces.

Leisure & Spa

Leisure Centre (Gym/Pool): Turn left before the elevator on Floor 0 and follow the corridor.

ESPA Spa: Located beyond Bellini's Restaurant.

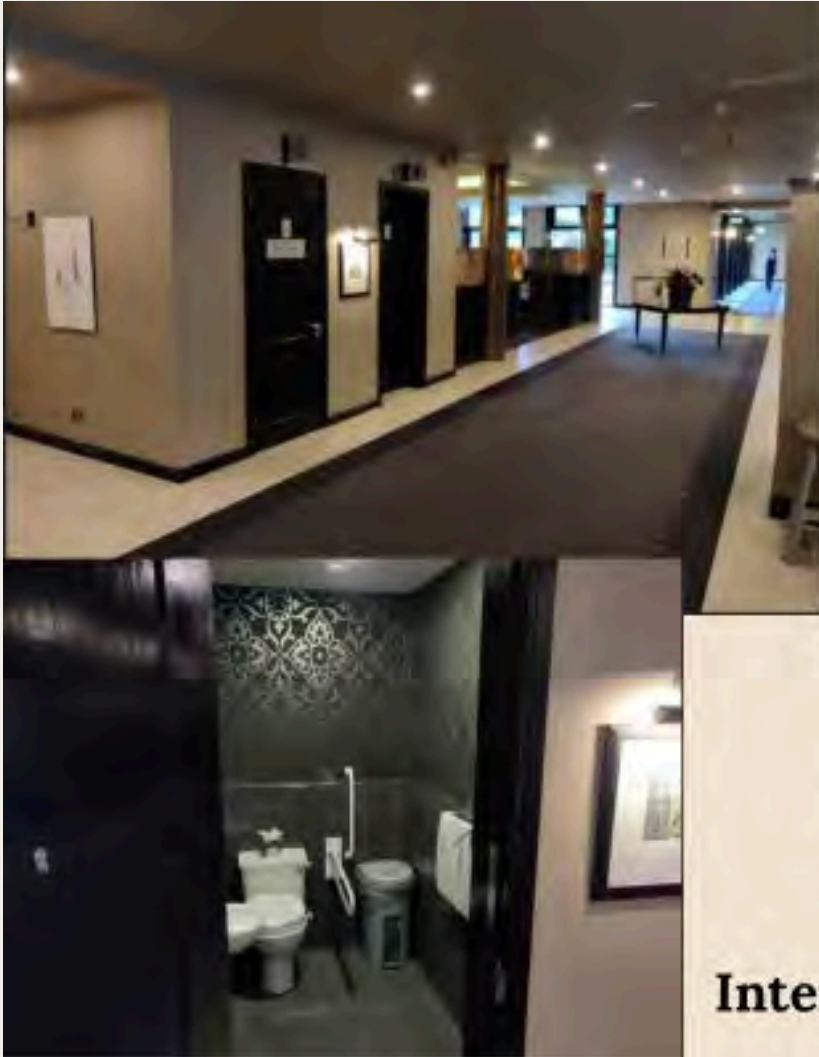
Treatment rooms, thermal suites, and relaxation rooms are wheelchair accessible. Please ask a member of staff for guidance.



Step-Free Hotel Navigation & Facilities

Public Bathrooms

There are two primary accessible bathrooms in our public spaces:
Floor 0: Located at the Conference and Leisure Centre entrance.
1st Floor: Located just off the elevator exit.



Toilet Access – First Floor

Location:
Toilet facilities are located on the First Floor, just off the elevator exit.
Entrance Width: 77 cm.
Internal Circulation Space: 98 cm.



Toilet Access – Ground Floor (Floor 0)

Location: Toilet facilities are located on Floor 0 near the Conference and Leisure Centre entrance.
Entrance Width: 77 cm.
Internal Circulation Space: 100 cm.
Toilet to Handrail Clearance: 20 cm between the toilet and the handrail.



Leisure Centre – Disabled Bathroom (Floor 0)

Entrance Width: 88 cm
Internal Circulation Space: 130 cm

(measured from door to grab handle)



Dining & Dietary Needs

Dining Locations

- **Café Bar:** Located on the 1st Floor. Exit the elevator straight ahead; the bar is to your left and right.
- **Bellini's Restaurant:** Located behind the main bar and accessed via a ramp.

Table Service

If you require assistance during breakfast, a member of staff would be delighted to fetch your desired items from the Breakfast Buffet for you.

Dietary Requirements

We cater for all dietary requirements. Please inform your server of your needs, and we will be happy to offer recommendations and ensure your meal is prepared safely.



Accommodation & Room Features

Accessible Bedrooms

Currently, accessible rooms are located on the 2nd and 3rd floors, reachable via our elevator.

Configuration: Can be booked as a single room or an interconnecting room. Beds can be set as a Super King or two single beds.

Mobility Space: Upon request, we can remove the sofa and coffee table to provide extra movement space.

Bathrooms: These rooms feature a walk-in shower (no bath). Shower stools are available upon request.

Sensory & Neurodivergent Friendly

Room 127 (Floor 1): While a non-disabled bathroom, this room is highly recommended for guests with sensory or neurodivergent needs.

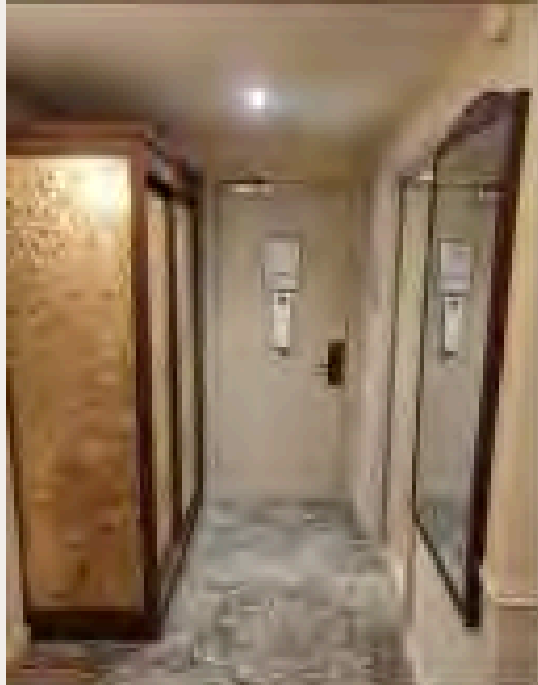
Room Amenities

Fridge: All rooms have a fridge in the middle drawer of the vanity unit.

Medication: If your medication requires freezing, please inform staff. We will store it in our freezers and retrieve it for you at any time.

Allergies: All mattresses, duvets, and pillows are hypoallergenic.

Accommodation & Room Features



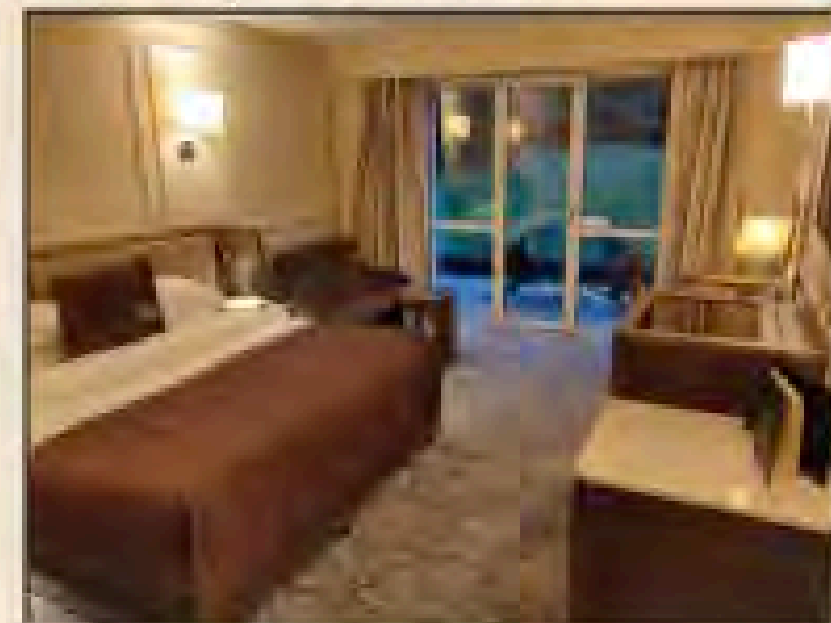
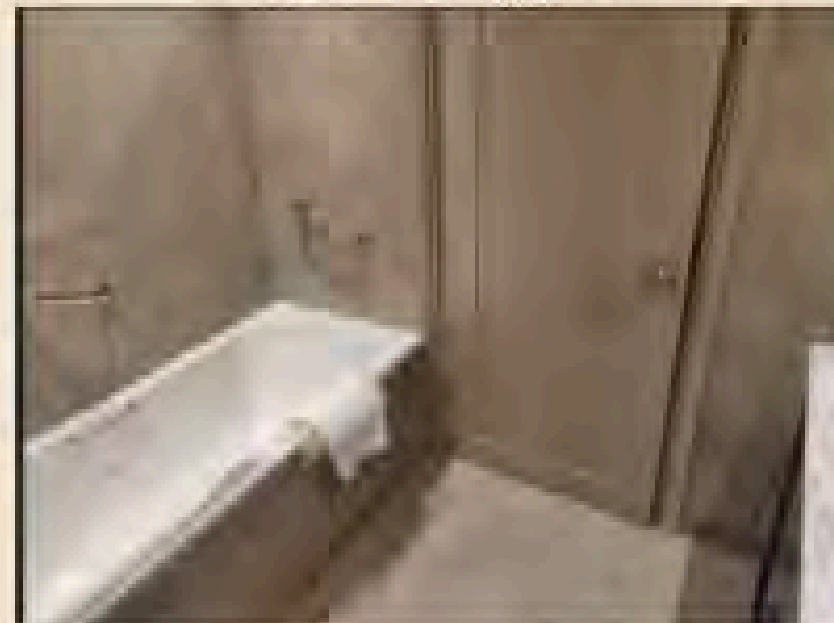
Floor 1 – Room 127 (Non-Accessible Bathroom)

Location: First floor, near the Spa and Restaurant.

Bathroom Type: Step-in bath.

Patio Accessibility: Patio access available from the first floor.

Accessibility Note: This room is not recommended for guests with mobility impairments due to the bathroom layout. However, it may be suitable for guests with sensory needs or neurodivergent guests, depending on individual requirements.



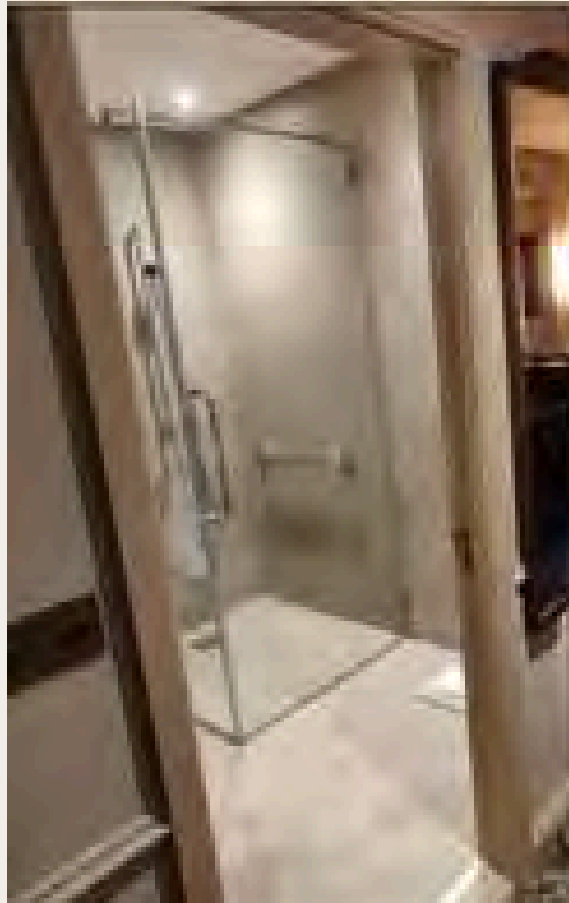
Accommodation & Room Features



203 Balcony Room

Entrance To Room
Space: 78.5cm

Circulation to room
Space: 90cm



Entrance To
Bathroom Space:
78.5cm

Circulation to Bathroom
Space: 60 cm



Accommodation & Room Features

Fridge & Vanity Dresser

Fridge in Vanity Dresser : Provided in all bedrooms



Emergency & Medical Contacts

Emergency Evacuation

In case of emergency, please remain calm. Study the evacuation plan hanging on the rear of your bedroom door.

Local Medical Support

Closest Hospital: CUH (10.7km | ~18 min). T12 PX28 | (021) 492 2000.

SouthDoc Southside (After-hours GP): 7.2km | ~12 min. T12 N6KR | (0818) 355 999.

Douglas Medical Centre: 1.7km | ~5 min. T12 A3PC | (021) 436 3550.

Doctor365 (Walk-in): 2.1km | ~7 min. T12 PTW9 | 0818 000 365.



Technical Measurements & Gallery



Technical Measurements & Gallery Contents

- Floor 0: Elevator Entrance & Circulation Page 16
- 1st, 2nd, & 3rd Floor: Elevator Exit/Entrance Measurements Page 17
- 1st Floor: Access Hall to Spa & 100-Series Bedrooms Page 18
- Spa Elevator: Exit & Entrance Page 19
- Room 203: Balcony Room Entrance & Circulation Page 20
- Room 127 (Floor 1): Layout & Features Page 21
- Conference & Leisure Centre: Entrance Measurements Page 22
- Bar & Restaurant: Entrance Measurements Pages 23–24
- Lounge & Garden Room: Circulation Paths Page 25
- Old House to Orangery & Reception to Garden Room Page 27
- Sherrard Event Room: Access & Layout Page 29
- In-Room Amenities: Fridge Storage & Placement Page 30



Elevator Access - Floor 0

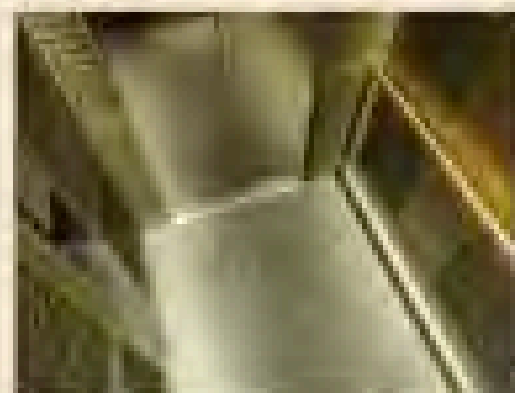
Location: Near the Conference and Leisure Centre entrance.

Entrance Width: 90 cm.

External Circulation Space: 250 cm outside the elevator.

Elevator Dimensions: 179 cm × 127 cm (L × W).

Internal Circulation Space: 160 cm inside the elevator.



First Floor – Elevator Exit

Entrance Width: 90 cm

External Circulation Space: 250 cm outside the elevator

Elevator Dimensions: 179 cm × 127 cm (L × W)

Internal Circulation Space: 160 cm inside the elevator



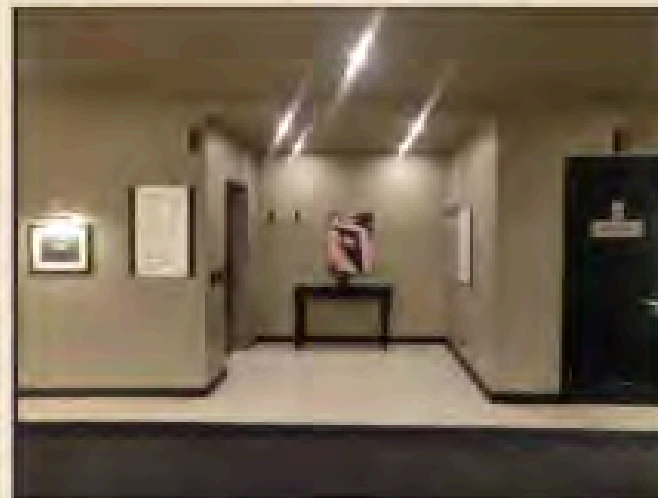
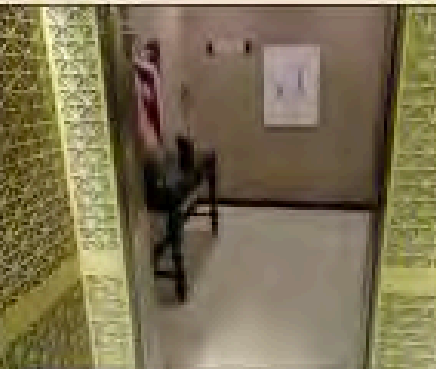
Second Floor – Elevator Exit

Entrance Width: 90 cm

External Circulation Space: 150 cm outside the elevator

Elevator Dimensions: 179 cm × 127 cm (L × W)

Internal Circulation Space: 160 cm inside the elevator



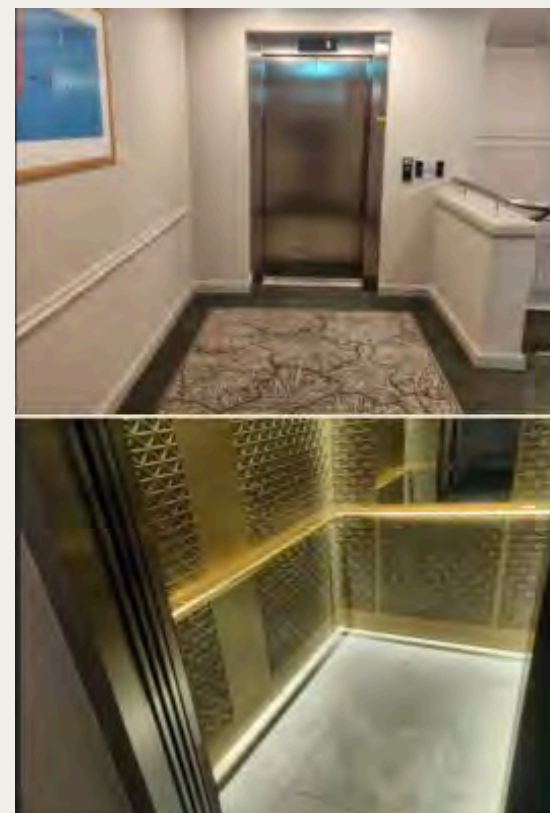
Third Floor – Elevator Exit

Entrance Width: 90 cm

External Circulation Space: 150 cm outside the elevator

Elevator Dimensions: 179 cm × 127 cm (L × W)

Internal Circulation Space: 160 cm inside the elevator



First Floor – Access Hall to Spa and 100s Bedrooms



Entrance

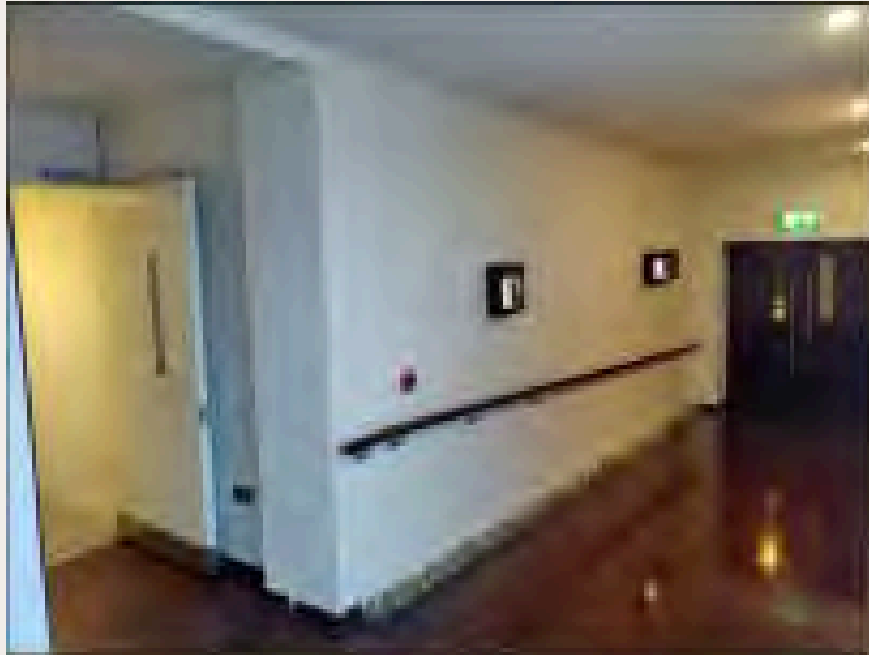
Width: 195 cm

Internal

Circulation

Space: 195 cm

*(minimum
space available)*



Spa Floor – Elevator Exit

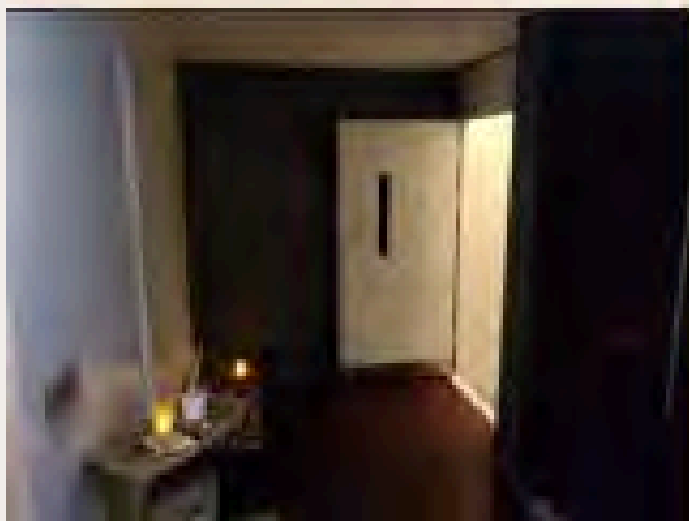
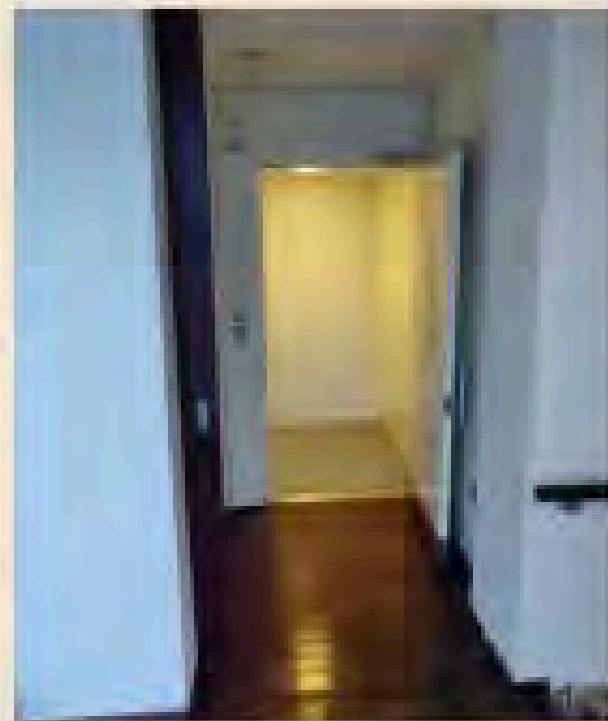
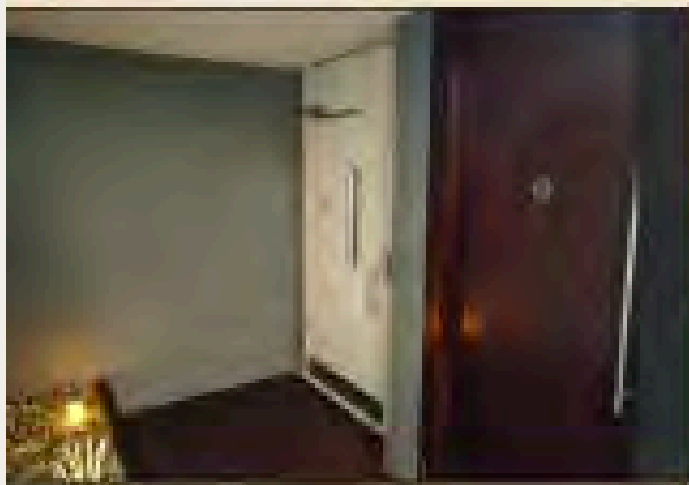
Entrance Width: 90 cm

External Circulation Space:
150 cm outside the elevator

Elevator Dimensions: 117x117

Internal Circulation Space:

179*127 (LxW)

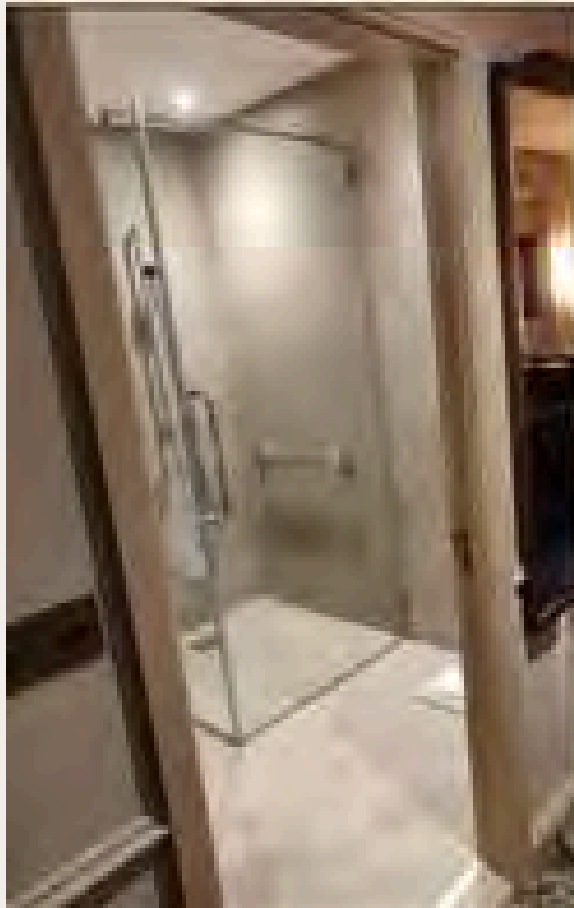




203 Balcony Room

Entrance To Room
Space: 78.5cm

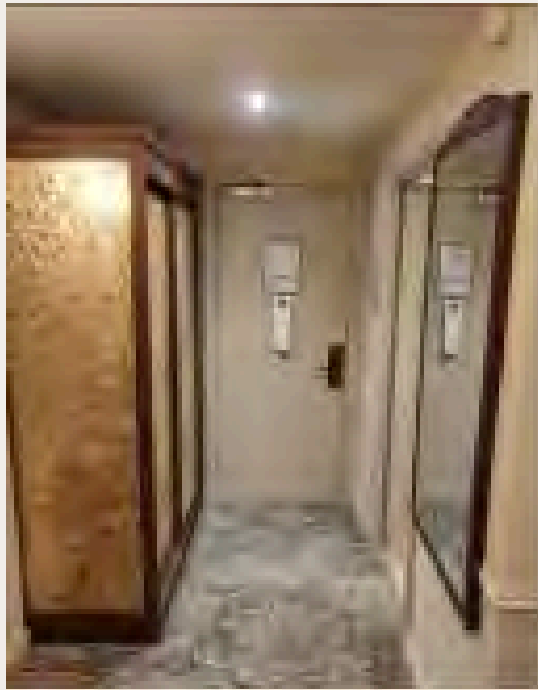
Circulation to room
Space: 90cm



Entrance To
Bathroom Space:
78.5cm

Circulation to Bathroom
Space: 60 cm





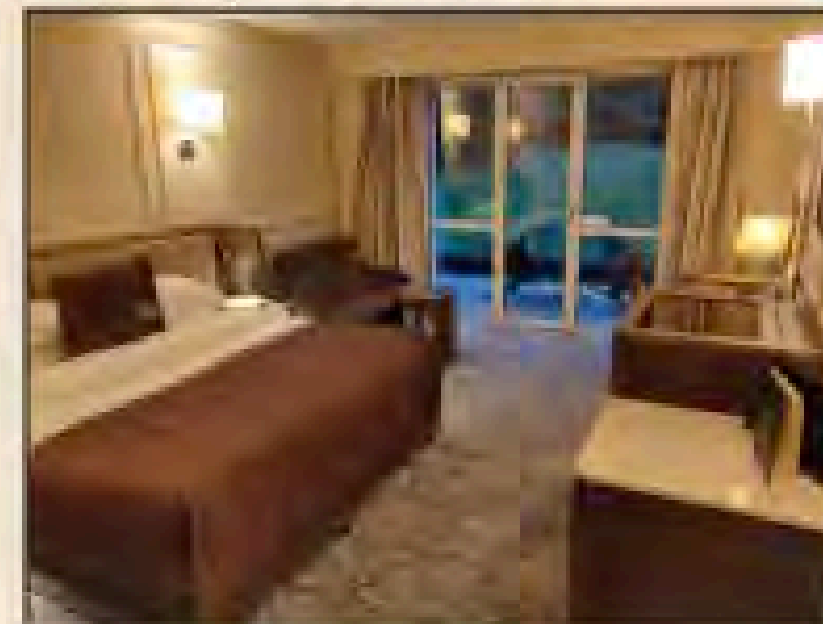
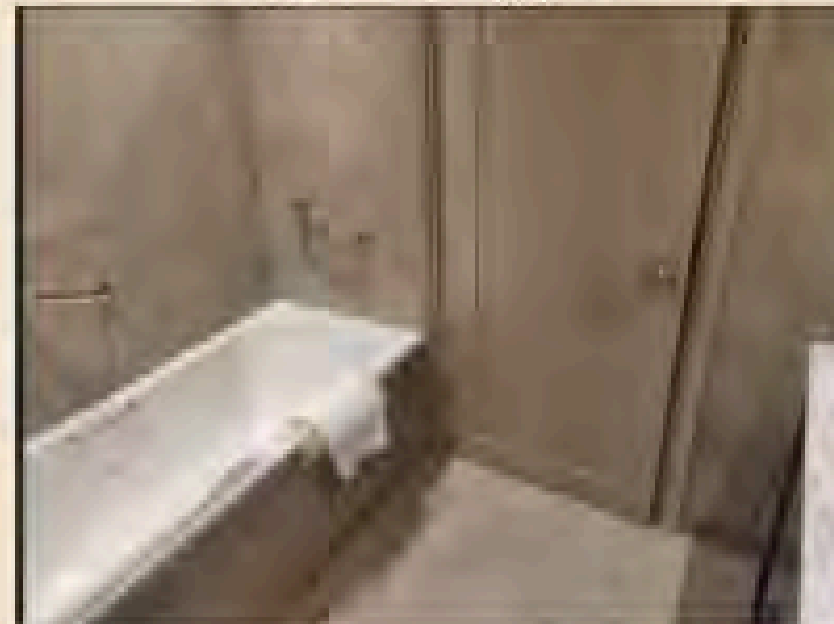
Floor 1 – Room 127 (Non-Accessible Bathroom)

Location: First floor, near the Spa and Restaurant.

Bathroom Type: Step-in bath.

Patio Accessibility: Patio access available from the first floor.

Accessibility Note: This room is not recommended for guests with mobility impairments due to the bathroom layout. However, it may be suitable for guests with sensory needs or neurodivergent guests, depending on individual requirements.



Lower Entrance – Leisure & Conference (Floor 0)



Entrance Width: 200 cm

Internal Circulation

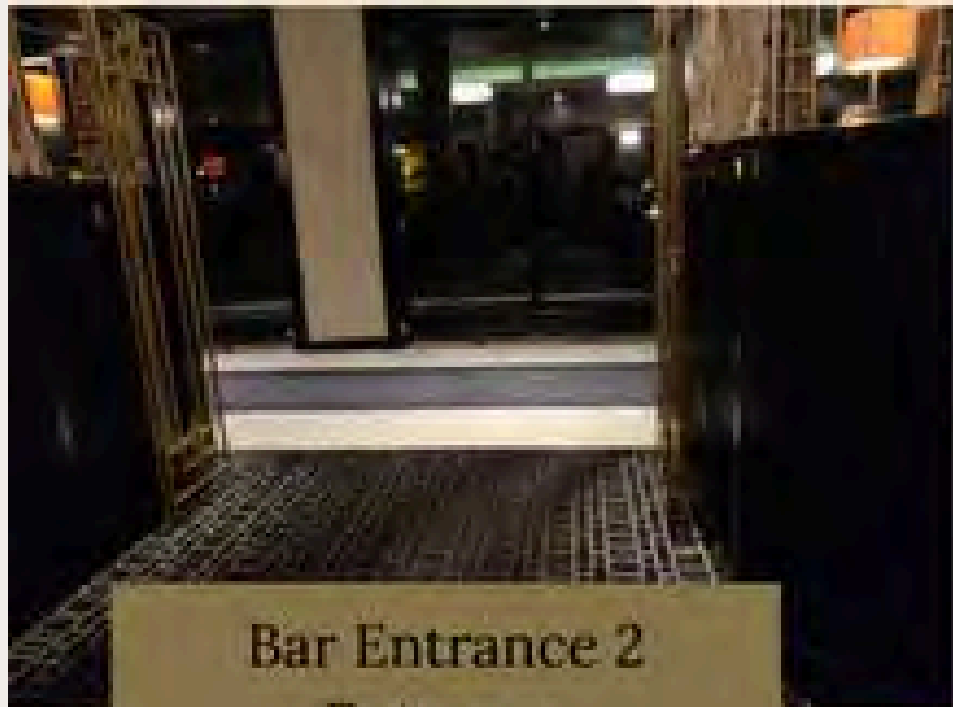
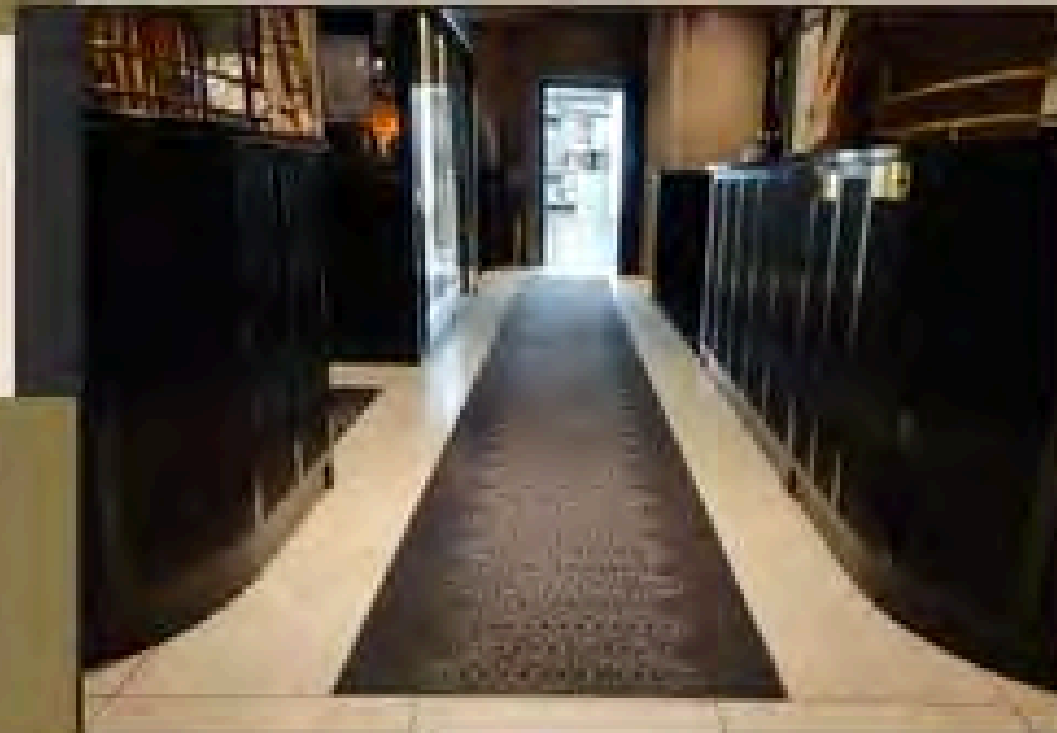
Space: 230 cm

(minimum space available)



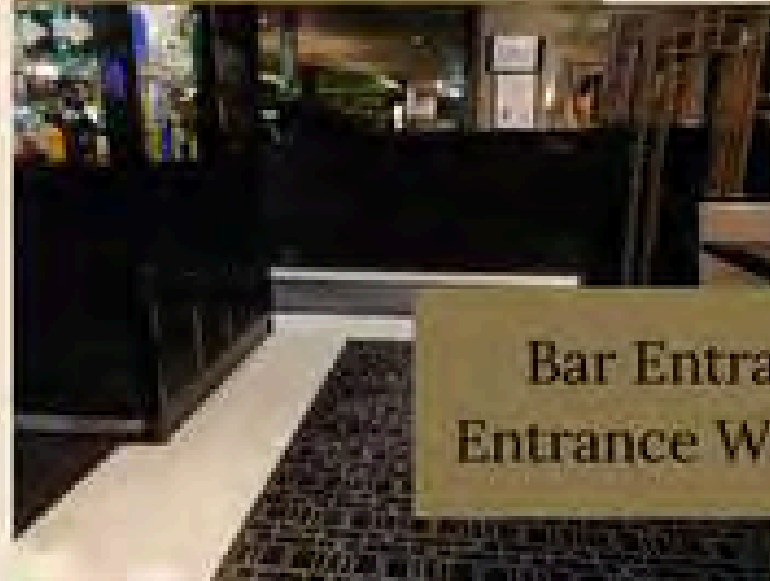
Bar Entrance 1
Entrance
Measurements:
203cm

First Floor Access -Hall to Bar .



Bar Entrance 2
Entrance
Measurements: 150cm

Bar Entrance 3
Entrance
Measurements:
150cm



Bar Entrance 4 & 5
Entrance Width: 160 cm

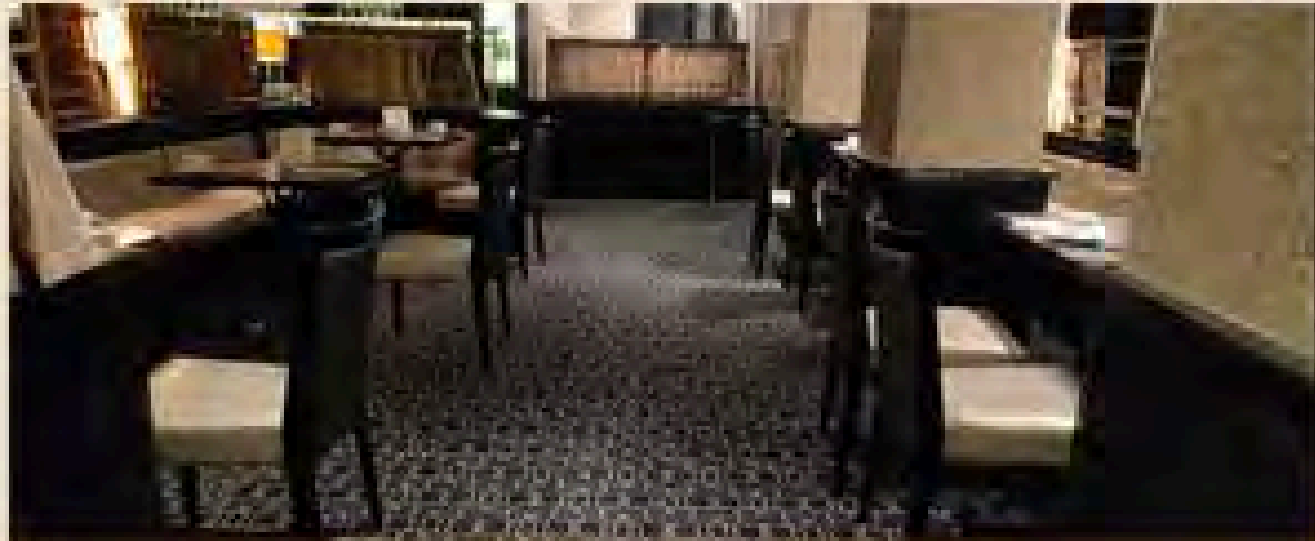




First Floor - Access Ramp to Bellini's Restaurant

Location: First floor, providing access to Bellini's Restaurant

Restaurant -
Entrance Hall
Entrance Width:
150 cm
Internal
Circulation Space:
130 cm



Resturant Dining Movement Space
Occupied: 100cm
Vacant : 125cm

Restaurant - Ramp (Entrance & Exit)
Ramp Width (Entrance & Exit): 150 cm
Circulation Space at Entrance: 130 cm
Circulation Space at Exit: 150 cm

Lounge & Garden Room - Dining Areas

Lounge Dining Area: Circulation space - 226 cm
(Tables 301-308)

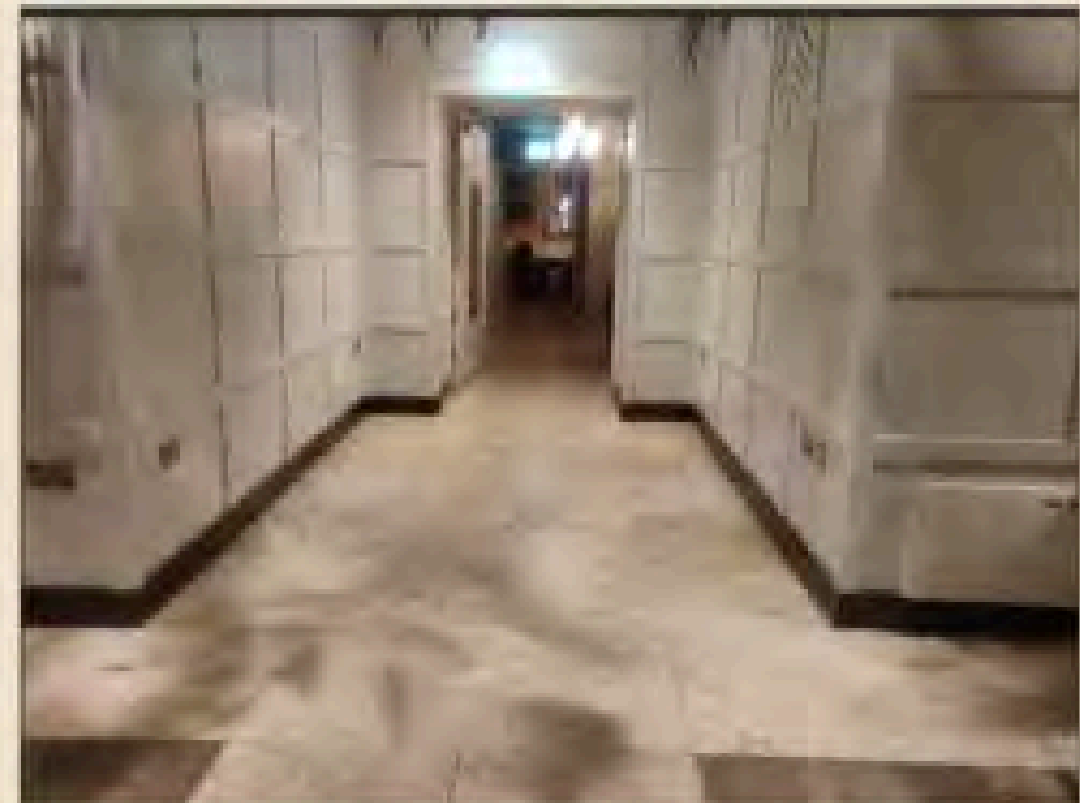
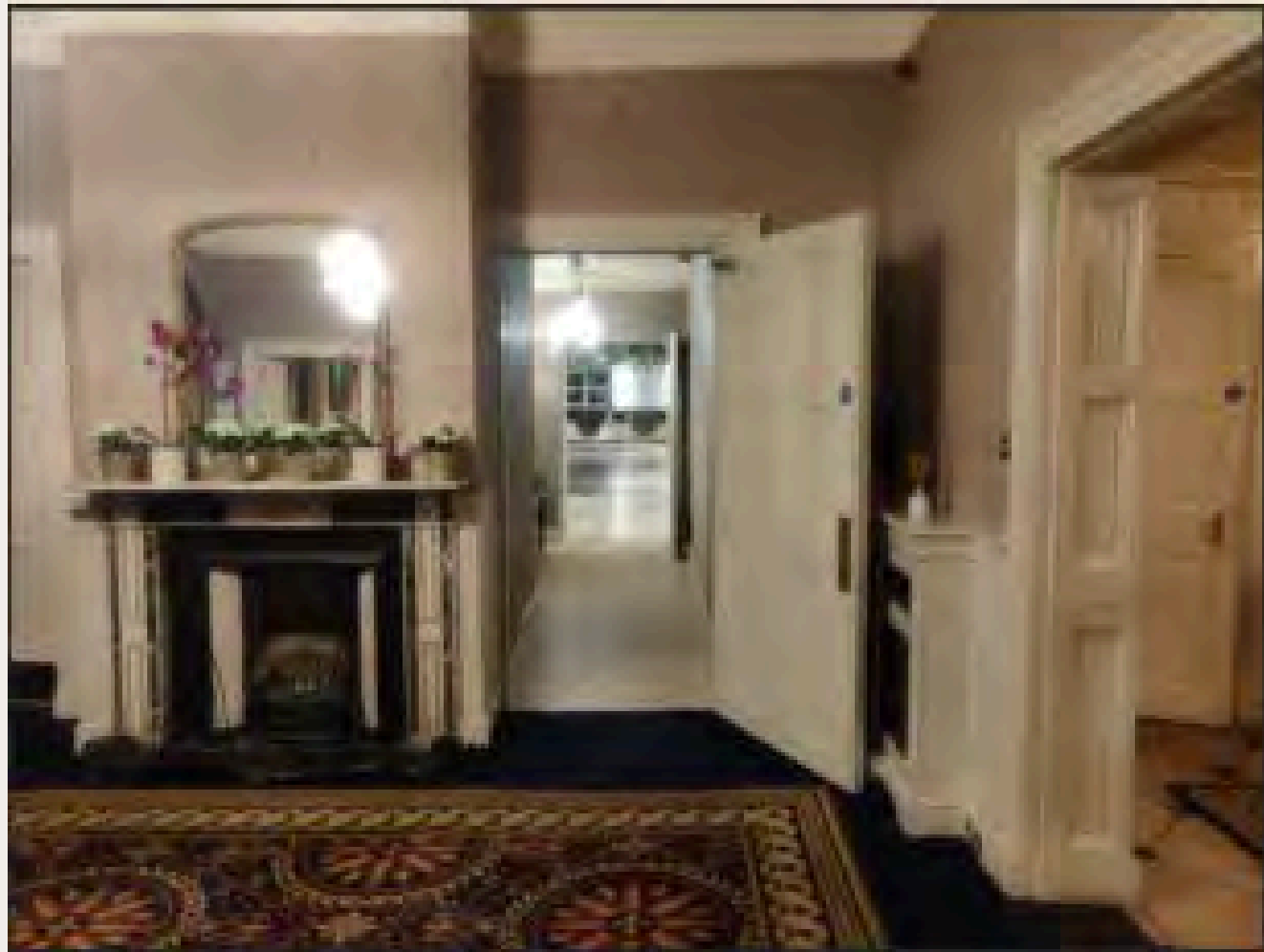
Garden Room Dining Area: Circulation space -
330 cm (Tables 309)

Table
309

TABLE
301

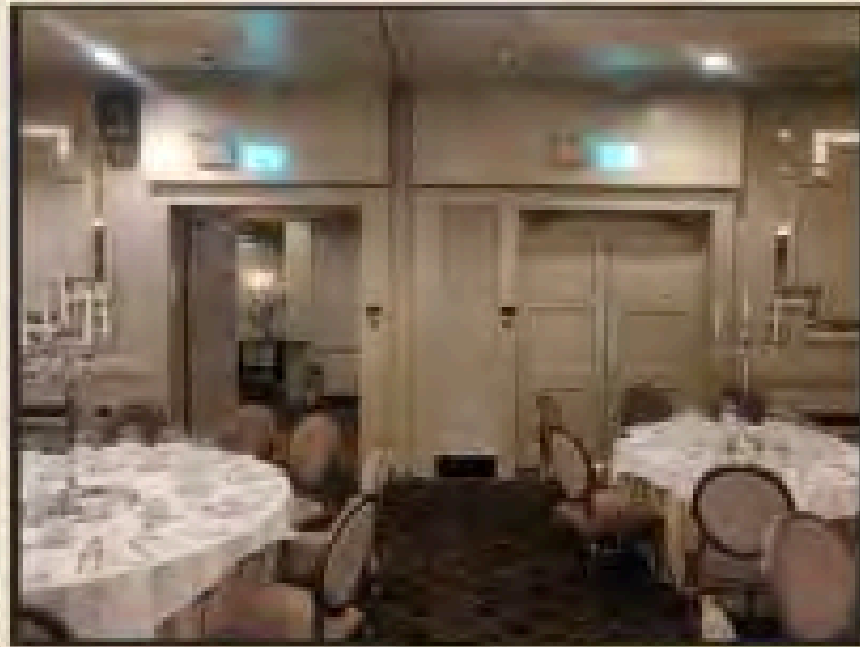


**Old House – Access to The
Orangery
Entrance Width: 120 cm**



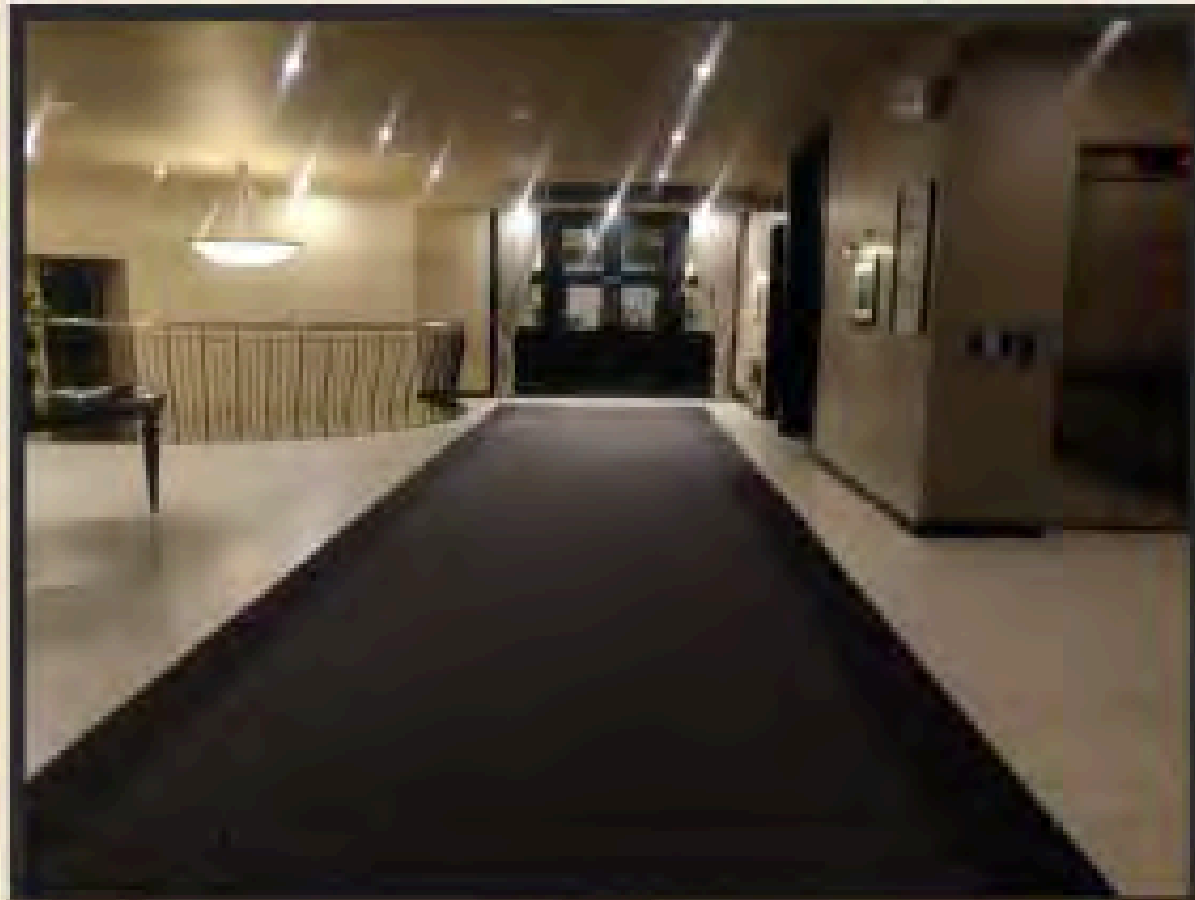
**Old House - Access to New House (Garden Room)
Entrance Width: 97 cm**





Sherrard Event Room

- Entrance Width: 160 cm



Fridge & Vanity Dresser
Fridge in Vanity Dresser : Provided in all bedrooms



Conclusion

Catering to Every Guest's Needs

At The Maryborough, hospitality is about more than just a stay—it is about ensuring every guest feels at home, respected, and fully supported. We are committed to the ongoing evolution of our accessibility standards and believe that through clear communication and proactive care, we can provide an exceptional experience for everyone. We look forward to welcoming you and making your visit to Cork City truly memorable.

If there is anything further we can do to enhance your comfort during your stay, please do not hesitate to reach out to any member of our team.

Credits

Author: Onóir O'Brien

Researcher: Johannes Eschler

